



Ektron

eBusiness the way it should be



Ektron® eWebWP Installation/ Integration Manual

Release 1.2, Revision 3

Ektron® Inc.
5 Northern Blvd., Suite 6
Amherst, NH 03031
Tel: +1 603-594-0249
Fax: +1 603-594-0258
Email: sales@ektron.com
<http://www.ektron.com>

Copyright 2003 Ektron®, Inc. All rights reserved.

EKTRON is a registered trademark of Ektron, Inc.

Release 1.2, Revision 3, March, 2003

EKTRON, INC. SOFTWARE LICENSE AGREEMENT

** READ THIS BEFORE LOADING SOFTWARE**

YOUR RIGHT TO USE THE PRODUCT DELIVERED IS SUBJECT TO THE TERMS AND CONDITIONS SET OUT IN THIS LICENSE AGREEMENT. USING THIS PRODUCT SIGNIFIES YOUR AGREEMENT TO THESE TERMS. IF YOU DO NOT AGREE TO THIS SOFTWARE LICENSE AGREEMENT, DO NOT DOWNLOAD.

CUSTOMER should carefully read the following terms and conditions before using the software program(s) contained herein (the "Software"). Downloading and/or using the Software or copying the Software onto CUSTOMER'S computer hard drive indicates CUSTOMER'S acceptance of these terms and conditions. If CUSTOMER does not agree with the terms of this agreement, CUSTOMER should not download.

Ektron, Inc. ("Ektron") grants, and the CUSTOMER accepts, a nontransferable and nonexclusive License to use the Software on the following terms and conditions:

1. Right to use: The Software is licensed for use only in delivered code form. Each copy of the Software is licensed for use only on a single URL. Each license is valid for the number of seats listed below (the "Basic Package"). Any use of the Software beyond the number of authorized seats contained in the Basic Package without paying additional license fees as provided herein shall cause this license to terminate. Should CUSTOMER wish to add seats beyond the seats licensed in the Basic Package, the CUSTOMER may add seats on a block basis at the then current price for additional seats (see product pages for current price). The Basic Packages are as follows:

Ektron eMPower for ColdFusion -- Licensed for ten seats (10 named users) per URL.

Ektron CMS100 — Licensed for ten seats (10 named users) per URL.

Ektron CMS200 — Licensed for ten seats (10 named users) per URL.

Ektron CMS300 — Licensed for ten seats (10 named users) per URL.

Ektron eWebEditPro — Licensed for ten seats (10 named users) per URL.

Ektron eWebEditPro+XML — Licensed for ten seats (10 named users) per URL.

Ektron eWebWP — Licensed for unlimited seats per URL.

For purposes of this section, the term "seat" shall mean an individual user provided access to the capabilities of the Software.

The CUSTOMER may not modify, alter, reverse engineer, disassemble, or decompile the Software. This software product is licensed, not sold.

2. Duration: This License shall continue so long as CUSTOMER uses the Software in compliance with this License. Should CUSTOMER breach any of its obligations hereunder, CUSTOMER agrees to return all copies of the Software and this License upon notification and demand by Ektron.

3. Copyright: The Software (including any images, "applets," photographs, animations, video, audio, music and text incorporated into the Software) as well as any accompanying written materials (the "Documentation") is owned by Ektron or its suppliers, is protected by United States copyright laws and international treaties, and contains confidential information and trade secrets. CUSTOMER agrees to protect the confidentiality of the Software and Documentation. CUSTOMER agrees that it will not provide a copy of this Software or Documentation nor divulge any proprietary information of Ektron to any person, other than its employees, without the prior consent of Ektron; CUSTOMER shall use its best efforts to see that any user of the Software licensed hereunder complies with this license.

4. Limited Warranty: Ektron warrants solely that the medium upon which the Software is delivered will be free from defects in material and workmanship under normal, proper and intended usage for a period of three (3) months from the date of receipt.

Ektron does not warrant the use of the Software will be uninterrupted or error free, nor that program errors will be corrected. This limited warranty shall not apply to any error or failure resulting from (i) machine error, (ii) Customer's failure to follow operating instructions, (iii) negligence or accident, or (iv) modifications to the Software by any person or entity other than Company. In the event of a breach of warranty, Customer's sole and exclusive remedy, is repair of all or any portion of the Software. If such remedy fails of its essential purpose, Customer's sole remedy and Ektron's maximum liability shall be a refund of the paid purchase price for the defective Products only. This limited warranty is only valid if Ektron receives written notice of breach of warranty within thirty days after the warranty period expires.

5. Limitation of Warranties and Liability: THE SOFTWARE AND DOCUMENTATION ARE SOLD "AS IS" AND WITHOUT ANY WARRANTIES AS TO THE PERFORMANCE, MERCHANTABILITY, DESIGN, OR OPERATION OF THE SOFTWARE. NO WARRANTY OF FITNESS FOR A PARTICULAR PURPOSE IS OFFERED. EXCEPT AS DESCRIBED IN SECTION 4, ALL WARRANTIES EXPRESS AND IMPLIED ARE HEREBY DISCLAIMED.

NEITHER COMPANY NOR ITS SUPPLIERS SHALL BE LIABLE FOR ANY LOSS OF PROFITS, LOSS OF BUSINESS OR GOODWILL, LOSS OF DATA OR USE OF DATA, INTERRUPTION OF BUSINESS NOR FOR ANY OTHER INDIRECT, SPECIAL, INCIDENTAL, OR CONSEQUENTIAL DAMAGES OF ANY KIND UNDER OR ARISING OUT OF, OR IN ANY RELATED TO THIS AGREEMENT, HOWEVER CAUSED, WHETHER FOR BREACH OF WARRANTY, BREACH OR REPUDIATION OF CONTRACT, TORT, NEGLIGENCE, OR OTHERWISE, EVEN IF COMPANY OR ITS REPRESENTATIVES HAVE BEEN ADVISED OF THE POSSIBILITY OF SUCH LOSS.

6. Miscellaneous: This License Agreement, the License granted hereunder, and the Software may not be assigned or in any way transferred without the prior written consent of Ektron. This Agreement and its performance and all claims arising from the relationship between the parties contemplated herein shall be governed by, construed and enforced in accordance with the laws of the State of New Hampshire without regard to conflict of laws principles thereof. The parties agree that any action brought in connection with this Agreement shall be maintained only in a court of competent subject matter jurisdiction located in the State of New Hampshire or in any court to which appeal therefrom may be taken. The parties hereby consent to the exclusive personal jurisdiction of such courts in the State of New Hampshire for all such purposes. The United Nations Convention on Contracts for the International Sale of Goods is specifically excluded from governing this License. If any provision of this License is to be held unenforceable, such holding will not affect the validity of the other provisions hereof. Failure of a party to enforce any provision of this Agreement shall not constitute or be construed as a waiver of such provision or of the right to enforce such provision.

If you fail to comply with any term of this License, YOUR LICENSE IS AUTOMATICALLY TERMINATED. This License represents the entire understanding between the parties with respect to its subject matter. YOU ACKNOWLEDGE THAT YOU HAVE READ THIS AGREEMENT, THAT YOU UNDERSTAND THIS AGREEMENT, AND UNDERSTAND THAT BY CONTINUING THE INSTALLATION OF THE SOFTWARE, BY LOADING OR RUNNING THE SOFTWARE, OR BY PLACING OR COPYING THE SOFTWARE ONTO YOUR COMPUTER HARD DRIVE, YOU AGREE TO BE BOUND BY THIS AGREEMENT'S TERMS AND CONDITIONS. YOU FURTHER AGREE THAT, EXCEPT FOR WRITTEN SEPARATE AGREEMENTS BETWEEN EKTRON AND YOU, THIS AGREEMENT IS A COMPLETE AND EXCLUSIVE STATEMENT OF THE RIGHTS AND LIABILITIES OF THE PARTIES.

©Copyright 1999 - 2003 Ektron, Inc. All rights reserved. LA10031, Revision 1.4

Table of Contents

Product Overview	1
About this Manual	2
Scope of This Manual	2
System Requirements	3
Server Installation: Windows	4
No Previous Release Installed.....	4
Same Release is Installed	8
Testing the Installation	11
Server Installation: Non-Windows	15
No Previous Release Installed.....	15
Updating the Relative Path to the Host Name	15
Testing the Installation	16
License Keys	20
License Key Format	20
Inserting the License Key.....	20
Using the .exe File.....	20
Using the .zip File	20
License Key Check	21
Invalid License Key Message	21
Domains in which You Can Use the License Key	22
Register Domains, not IP Addresses	22
Integrating eWebWP with ColdFusion	23
Creating Your Own Page	23
Setting Up a Form.....	23
Calling the eWebWP Custom Tag.....	23
First Time Installation of eWebWP	23
Integrating eWebWP with ASP.NET	25
Using the Sample Pages	25
Installing Sample Files.....	25
Creating Your Own Page	26
Register the Control File ewebwp.ascx	26

Setting up a Form	26
Place the Editor on the Form.....	26
Gaining Access to the Posted Content.....	27
Integrating eWebWP with ASP	29
Using the Sample Files	29
Installing Sample Files.....	29
Database Sample	30
Files in the Database Sample.....	31
The Edit Sample	32
Files in the Edit Sample.....	33
Creating Your Own Page	33
Including a Reference to ewebwp.asp.....	33
Entering a Relative Path.....	33
Entering an Absolute Path.....	33
Setting Up a Form	34
Placing the Editor on the Form	34
Inserting the Editor	35
Integrating eWebWP in an JSP Environment	36
Using the Sample Pages	36
Creating Your Own Page	36
Including a Reference to ewebwp.jsp	36
Setting Up a Form.....	37
Placing the Editor on the Form	37
Integrating eWebWP in a PHP Environment.....	39
Using the Sample Pages	39
Creating Your Own Page	39
Including a Reference to ewebwp.php.....	39
Setting Up a Form.....	40
Placing the Editor on the Form	40
Inserting the Editor	40
Integrating eWebWP in a Perl Environment	42
Creating Your Own Page	42
Include a Reference to ewebwp.pm	42
Setting Up a Form	42
Inserting the Editor	43
Integrating eWebWP Using JavaScript	44
Using the Sample Pages	44
Creating Your Own Page	45
Create an HTML Page.....	45
Include the eWebWP JavaScript File	45

Enter a Form Element	45
Inserting the Editor	46
Declaring a Content Field after Creating the Editor	46
Creating the Editor.....	46
Encoding Characters in the Value Attribute	47
How the Server Converts Characters	48
Encoding the Single Quote	49
Content Stored in a Textarea Field	49
Saving Content	49
Testing the Page	49
Database Setup	51
Windows-Based Systems	51
How eWebWP Interacts with a Database	51
How eWebWP Saves to the Database	51
Configuring the Database for ASP, ASP.NET, JSP and PHP	52
Configuring the Database for ColdFusion	55
Non-Windows Based Systems.....	57
Installing the Macromedia Flash Player on Clients.....	60
Checking the Flash Player Version	60
Installing the Flash Player with Internet Explorer	61
Installing the Flash Player with Other Browsers.....	61
Uninstalling eWebWP	62
Uninstalling the .exe File	62
Uninstalling the .zip File	62
Problems Deleting the eWebWP Folder with ColdFusion	62
First Option for Unlocking the Database.....	63
Second Option for Unlocking the Database	63



Product Overview

Ektron **eWebWP** is a browser-based text formatting editor. It offers a core set of basic word processor formatting features, including bold, italic, underline, bullet, hyperlink, copy, and paste. Based on Macromedia Flash technology, **eWebWP** runs on virtually all client platforms, including Windows, Macintosh, and other non-Windows platforms.

Ektron **eWebWP** is ideal for sites needing enhanced formatting capabilities for online users such as auction sites, resume posting, personal ads, discussion forums, Web logs, instant messaging, and Web-based e-mail.

Designed for easy integration with a database such as SQL or Access, the editor saves content as HTML that can then be displayed in dynamic Web pages without the editor being present. **eWebWP** is a great tool for users that need to enter and update formatted text with no knowledge of HTML.

You can use **eWebWP** with many Web development platforms, such as Macromedia's ColdFusion, Microsoft's Active Server Pages and ASP.NET, JSP, PHP, and Perl.

About this Manual

Scope of This Manual

The beginning chapters of this manual how to install **eWebWP** in the following environments.

- Windows server
- non-Windows server

Subsequent sections of this manual explain additional installation procedures (such as updating your license keys), how to uninstall **eWebWP**, and how to integrate it onto a Web page so that users can access it.

System Requirements

Browser for Editing	<i>Windows</i> - IE4+, NS4.7, NS6.2+, Opera6+ and Mozilla1.x <i>Mac OS X</i> - IE 5.1+, NS6.2+ and Mozilla 1.0.1+ <i>Mac OS 9.2</i> - IE 5.0+ Also, the PC using the editor must have Macromedia Flash Player 6,0,47,0 or higher.
Browser for Viewing	any browser
Web Server	Any dynamic Web application server
Server Operating System	<ul style="list-style-type: none">• Windows NT Server, 2000 Server• Windows 98, ME, 2000, XP with PWS• Sun Solaris• Linux• HP-UX• any other server OS

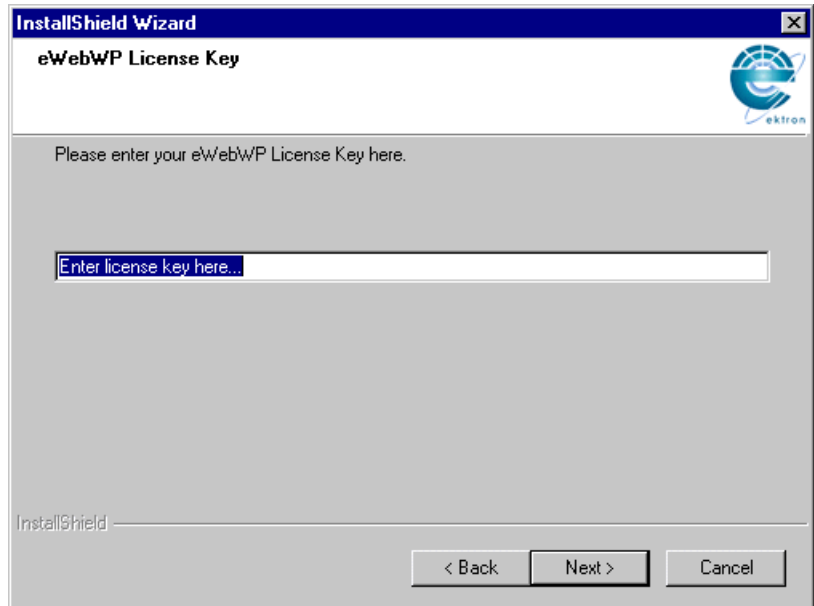
Server Installation: Windows

After you receive email from Ektron that includes a license key file (ewebwplicensekey.txt) and download the installation file, follow these steps to install **eWebWP** on a Windows server.

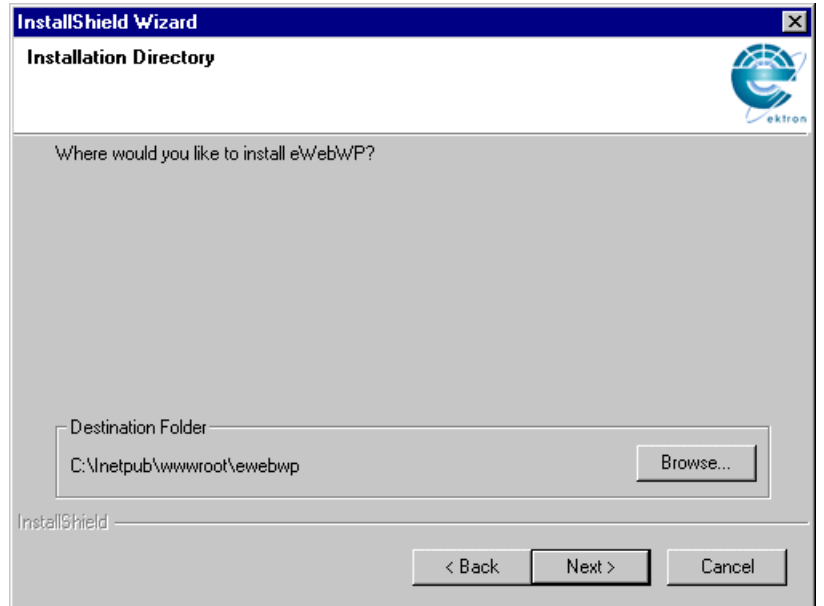
If you have	Read
Not previously installed eWebWP	"No Previous Release Installed" on page 4
Previously installed the current version of eWebWP and want to reinstall it	"Same Release is Installed" on page 8

No Previous Release Installed

1. Double click the installation file. The installation procedure begins. Follow the screen instructions.
2. When you are prompted to enter license keys, enter the license keys from the license key file (ewebwplicensekey.txt) that was attached to the email you received from Ektron.

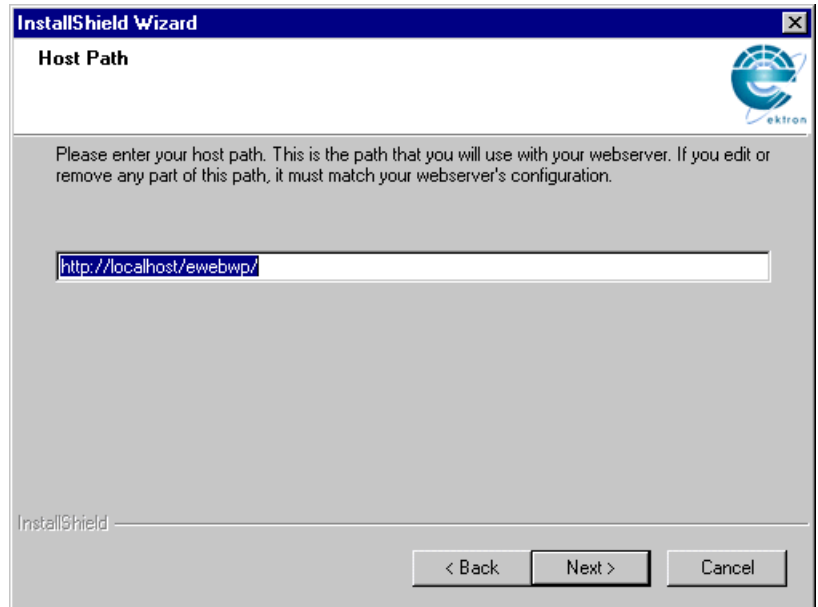


3. A screen (illustrated below) prompts you to specify a destination folder. If your dynamic Web server software is installed in
 - `c:\inetpub\wwwroot`, accept the default destination, **eWebWP**
 - a different directory, browse to that directory and install **eWebWP** there

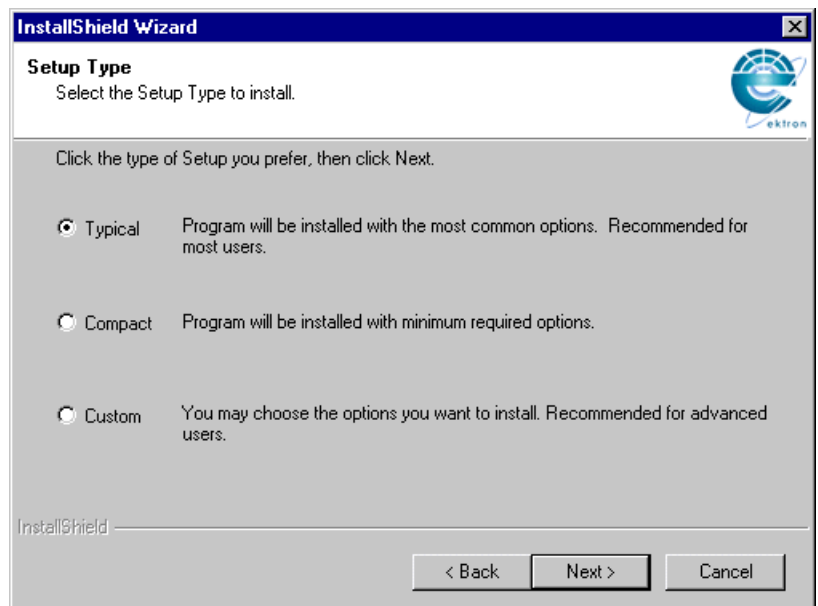


- The next screen (below) prompts you to enter the path to the **eWebWP** folder relative to the hostname.

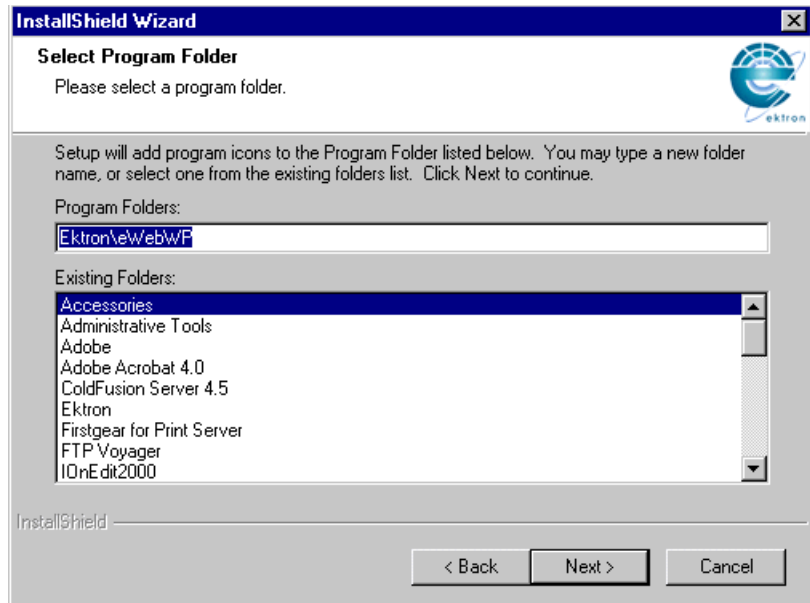
If you accepted the default destination directory in Step 3, accept the default path `/ewebwp/`. If you entered a different path in Step 3, enter that path here.



- The next screen prompts you to select a setup type. Normally, you would choose **Typical**.



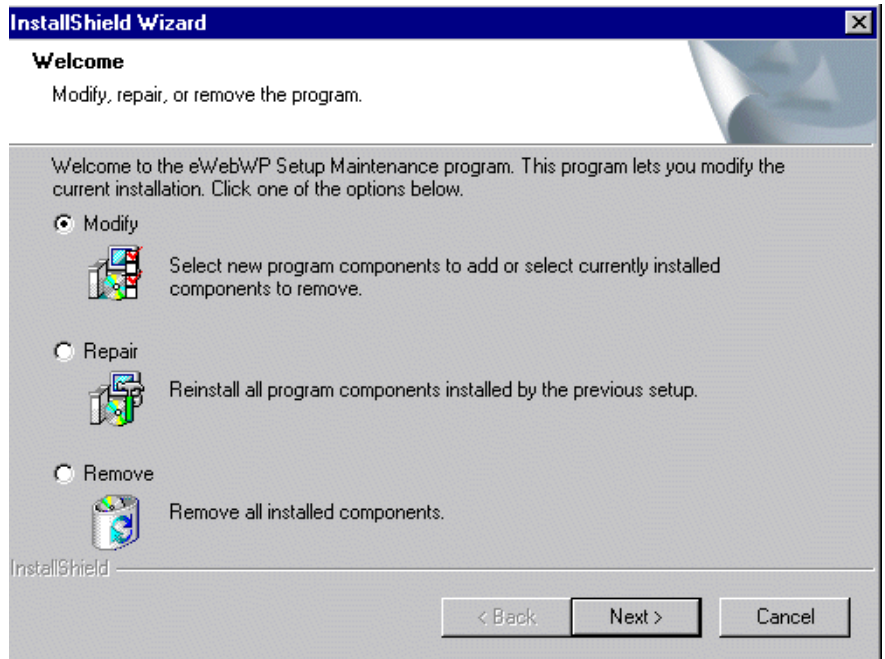
- The next screen (below) prompts you to select the folder to which you want to install program icons for **eWebWP**.



- A setup screen appears, indicating the progress of copying files to your server.
- When the copying is finished, a new window informs you that the installation is complete.

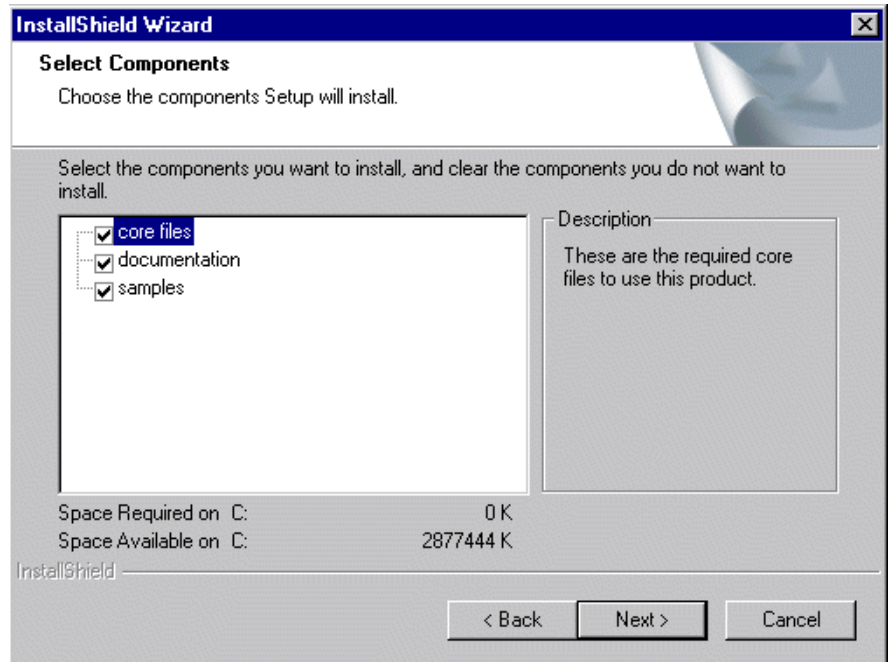
Same Release is Installed

- If the same release of **eWebWP** is installed on your server, a screen prompts you to **Modify**, **Repair** or **Remove** the program.



2. Select

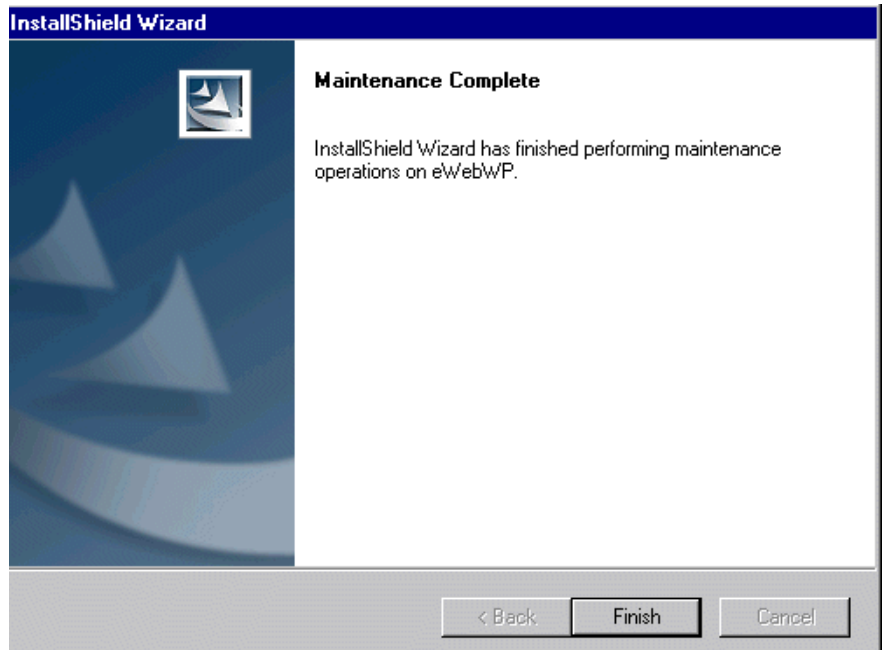
- **Modify** if you want to install or uninstall any components on the Select Components Window of the installation program (illustrated below).



For example, if you installed sample files but no longer want them, uncheck the box next to the files. The installation program will uninstall the files.

Conversely, if you did not install sample files but now want to, check the box next to **samples**. The installation program will install the files.

- **Repair** if you want to reinstall all files and components that were installed previously. You would use this option if you modified some **eWebWP** files (for example, ewebwp.js) and want to restore them to their original state.
 - **Remove** if you want to delete **eWebWP** from your server. This choice deletes all files, including the license key file.
3. When the copying is finished, a new window informs you that the maintenance is complete.



Testing the Installation

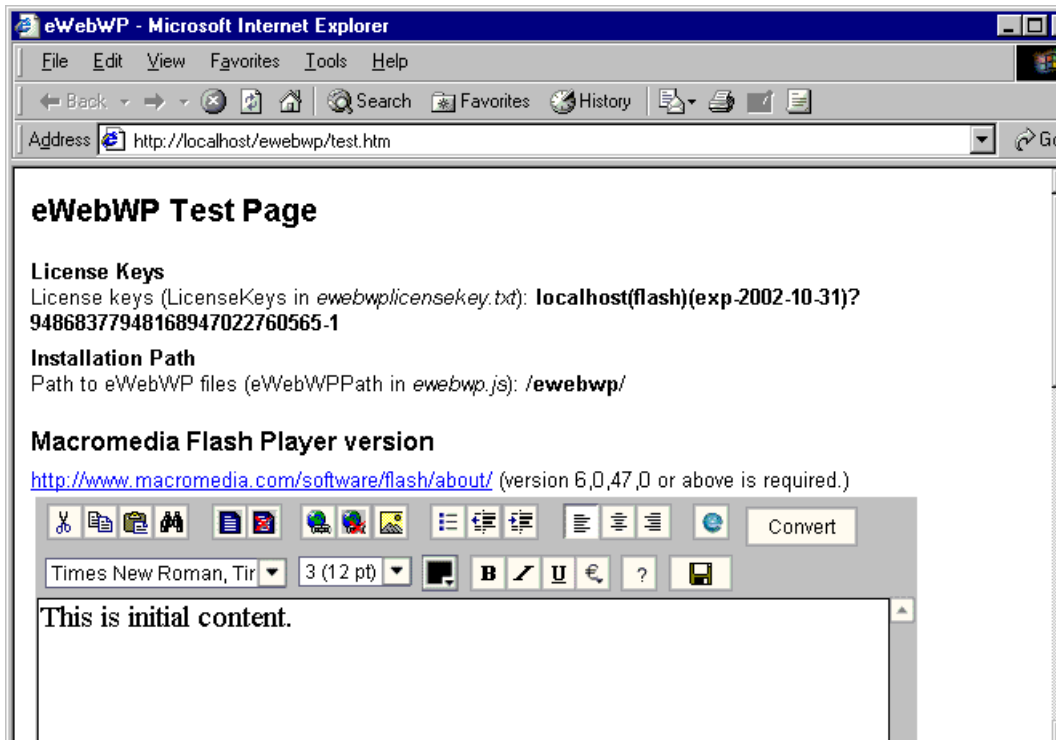
Before testing the editor, make sure that the client has Macromedia Flash Player 6,0,47,0 or higher. The free player, and instructions on how to install it, are available from <http://www.macromedia.com/shockwave/download/alternates/>.

To test the installation, enter the following in your browser's address field.

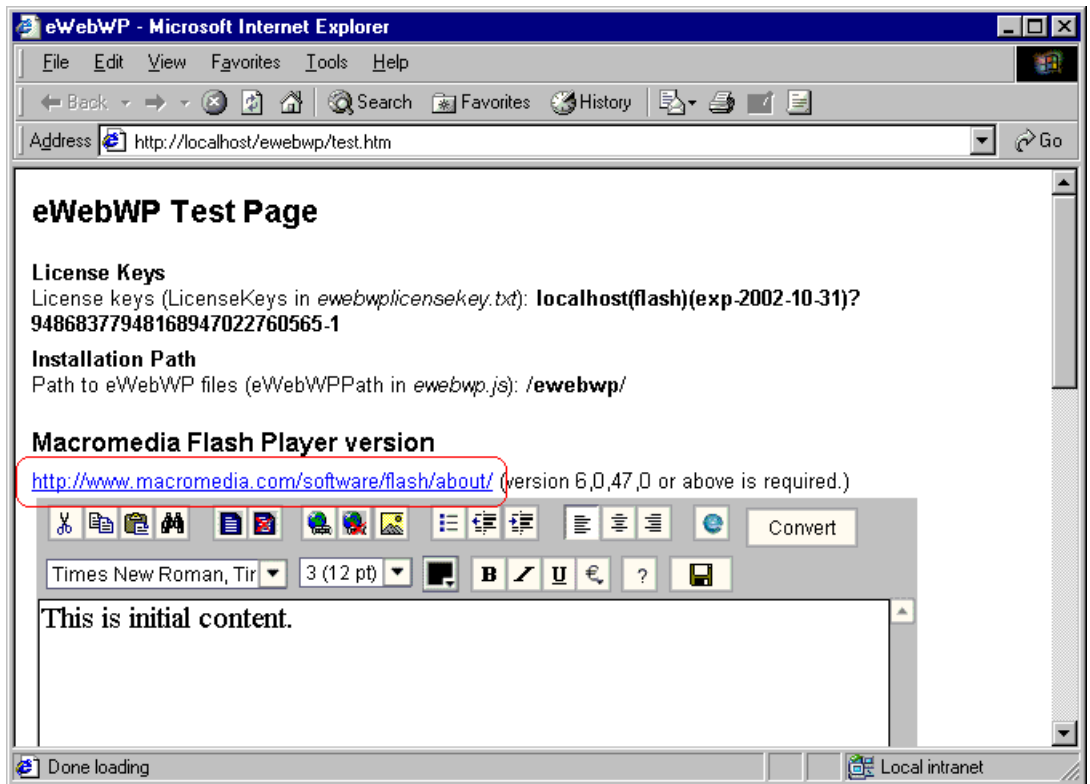
`http://mywebsite.com/ewebwp/test.htm`

Replace `mywebsite.com` with your domain name.

If you see an editor on the page (illustrated below), the installation was successful.



If you do not see the editor, make sure that you have the correct version of the Flash Player. To do this click <http://www.macromedia.com/software/flash/about/> on the test page (circled in red below). On the resulting web page, click **About** to see the version number of your Flash player.





Note that each browser requires its own Flash Player. So, for example, you may have a correct Flash Player for Internet Explorer but an outdated one for Netscape.

Server Installation: Non-Windows

After you receive email from Ektron that includes a license key file (ewebwplicensekey.txt) and download the installation file, follow these steps to install **eWebWP** on a non-Windows server.

No Previous Release Installed

1. Create a directory in your Web root named `/ewebwp`. For example, `mywebsite.com/ewebwp`.
2. Unzip the installation file to the `ewebwp` directory. Be sure to preserve the directory structure. The unzip action places several subdirectories and files into the folder.

WARNING!

Ektron recommends that you do *not* change the location of the installed files. If you do, **eWebWP** may not operate properly.

3. Copy the `ewebwplicensekey.txt` file to the `ewebwp` folder. This file was attached to an email that Ektron sent you when you downloaded **eWebWP**.
4. If necessary, update your relative path to the host name. To do this, see “Updating the Relative Path to the Host Name” on page 15.
5. If you want to use the sample database provided by Ektron, follow the instructions in the chapter titled “Setting up the Database.” You can study the sample files (located in `ewebwp\samples`) to learn how to integrate **eWebWP** onto a Web page.

Updating the Relative Path to the Host Name

1. Open `ewebwp.js`. On the line that reads `var ewebwpPath = "/ewebwp/"`, replace `/ewebwp/` with the new relative path.

2. Make the change listed in the table below, according to your dynamic Web server.

Web server	Edit this file (The default directory is ewebwp)	Update this line with the new relative path
ASP	ewebwp.asp	src="/ewebwp/ewebwp.js"
JSP	ewebwp.jsp	src="/ewebwp/ewebwp.js"
ASP.NET	ewebwp.ascx	src="/ewebwp/ewebwp.js"
PHP	ewebwp.php	src="/ewebwp/ewebwp.js"
Coldfusion	ewebwp.cfm in c:/CFUSION/CustomTags	<cfparam name="Attributes.Path" default="/ewebwp/"

3. If you installed sample files during the **eWebWP** installation but did not preserve the directory structure, update `src="../../../ewebwp.js"` with the new relative path in the sample files.

NOTE Enter two periods and a slash (../) for every directory between the directory in which ewebwp resides and the directory in which ewebwp.js resides. By default, ewebwp.js resides three directories down from ewebwp (in `ewebwp\samples\asp\edit`), hence three `../` combinations.

Testing the Installation

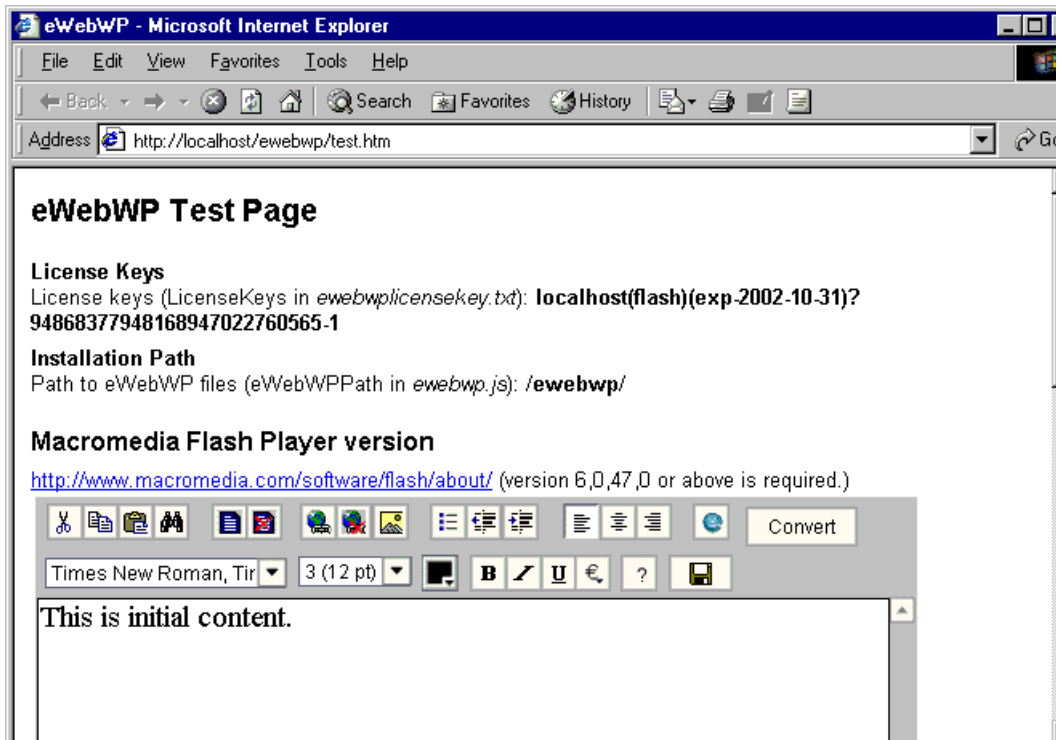
Before testing the editor, make sure that the client has Macromedia Flash Player 6,0,47,0 or higher. The free player, and instructions on how to install it, are available from <http://www.macromedia.com/shockwave/download/alternates/>.

To test the installation, enter the following in your browser's address field.

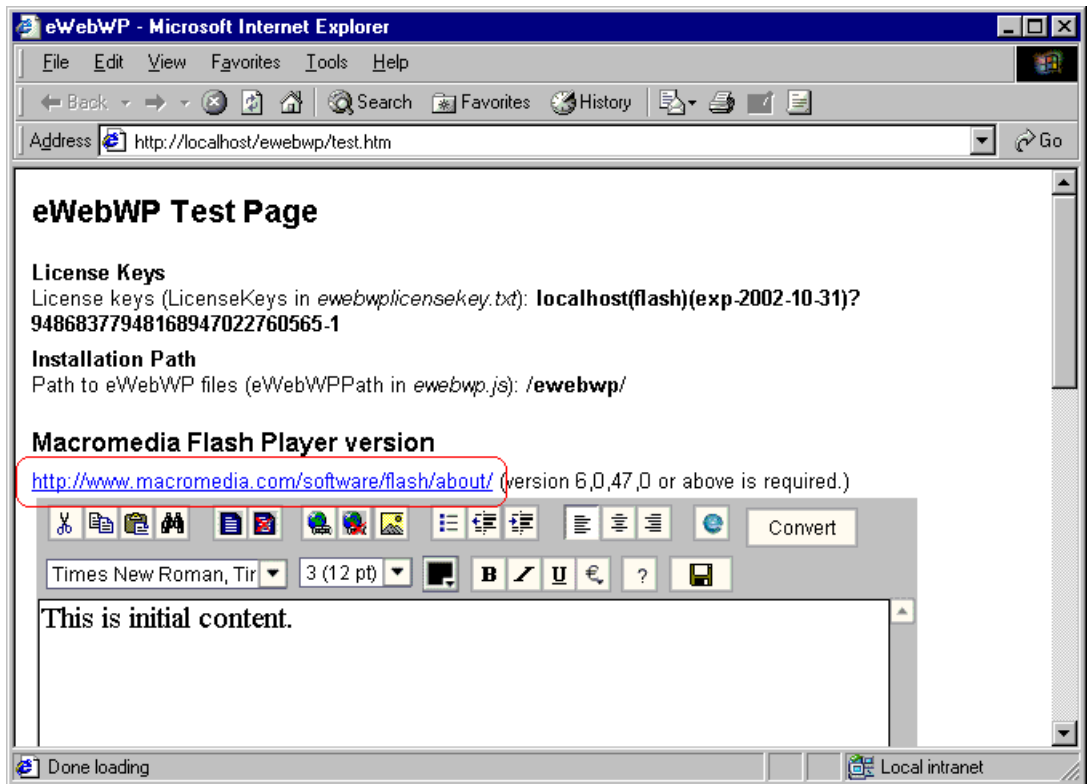
`http://mywebsite.com/ewebwp/test.htm`

Replace `mywebsite.com` with your domain name.

If you see an editor on the page (as illustrated below), the installation was successful.



If you do not see the editor, make sure that you have the correct version of the Flash Player. To do this click <http://www.macromedia.com/software/flash/about/> on the test page (circled in red below). On the resulting web page, click **About** to see the version number of your Flash player.





Note that each browser requires its own Flash Player. So, for example, you may have a correct Flash Player for Internet Explorer but an outdated one for Netscape.

License Keys

Ektron controls the use of **eWebWP** through a license key, a unique code assigned to your domain when you purchase **eWebWP**. Your license key is included as an attached .txt file to the email that Ektron sends when you request or purchase **eWebWP**.

Typically, the ewebwplicensekey.txt file stores a license key for a public server, a test server, and a development server. But, you can enter the keys in any manner.

License Key Format

A license key typically begins with a base URL (domain name, computer network name, or IP address) followed by descriptor tags, a question mark, a series of numbers, a hyphen and one or two digits signifying version number. For example:

```
"localhost(flash)(exp-2002-10-31)?94868377948168947022760565-1";
```

WARNING!

License keys cannot contain spaces or line breaks.

Inserting the License Key

Using the .exe File

If you download the executable (.exe) file, you are prompted to enter a license key during installation. **eWebWP** stores the license key that you enter in the ewebwplicensekey.txt file, located in the directory to which you install **eWebWP**.

Using the .zip File

If you are installing the .zip file, copy the ewebwplicensekey.txt file that Ektron emails to you when you download **eWebWP** to

the `/ewebwp` folder. That folder already has an `ewebwplicensekey.txt` file, but that file is blank and should be overwritten by the emailed file.

If you install a test version of **eWebWP**, and later purchase it, Ektron sends you email with license keys for the purchased product. When you receive new license keys, replace the old keys with new ones. If you do not, when the test license key expires, users cannot access eWebWP.

License Key Check

When you load a Web page that contains the editor, **eWebWP** checks the license key(s) against the domain.

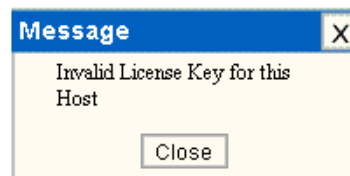
- If the URL of any valid license key matches the URL of the page being accessed, the editor appears.
- If no valid license key is found for the URL of the page being accessed, the editor is disabled and an **Invalid License** dialog appears.

Invalid License Key Message

If you have a broken license key or a license key with an incorrect base URL, an **Invalid License** dialog appears.



This is initial content.



You may be able to resolve this problem by clearing the cache of the server and any proxies. Alternately, the scripting code in your Web application may point to an **eWebWP** installation directory that is different from the one you entered the keys into.

Domains in which You Can Use the License Key

The license key is assigned to your base URL, which is typically your domain name. For example, if your domain name is `www.mycompany.com`, the license key follows this pattern: `www.mycompany.com(Flash)(exp-year-month-day)?1234567890`. The key also works with `mycompany.com`, that is, without the `www`.

You can use the editor in any subdirectory to that URL. For example, in an ASP environment, you can use `www.mycompany.com/sales/ewebwp.asp`.

Each domain name requires its own license key. For example, to support the domain names, `www.mycompany.com`, `sales.mycompany.com` and `support.mycompany.com`, you need three license keys.

Register Domains, not IP Addresses

When you purchase a license key, be sure to register a domain name, not an IP address. For example, register `www.mycompany.com`, not `192.168.0.1`.

Although **eWebWP** supports IP addresses, the domain that you license becomes the required URL in the browser address. For example, if you register `192.168.0.1` in an ASP environment, you would need to access the page with the editor as `http://192.168.0.1/somedirectory/editorpage.asp`.

Since users would typically not identify a Web page by its IP address, you should register the domain name instead.

Integrating eWebWP with ColdFusion

Creating Your Own Page

If you want to create a new ColdFusion page and place **eWebWP** on that page, the page needs to include these actions.

1. Set up a form.
2. Call the **eWebWP** custom tag.

The rest of this section explains how to complete these tasks.

Setting Up a Form

When setting up a form, follow these steps.

1. Declare a form.
2. Enter a URL as the action. This defines the page that manipulates the user's input when the user presses the save button.
3. Enter **Post** as the method.

Here is a sample form declaration.

```
<form action="edit.cfm?preview" method="post">
```

Calling the eWebWP Custom Tag

First Time Installation of eWebWP

To place the editor on a ColdFusion page, enter a call to the custom tag with the following elements within the form.

```
<CFMODULE template EditorName Width Height Value>
```

Attribute	Description
Template	The path to the directory to which eWebWP is installed. By default, this attribute is set to /ewebwp/.
EditorName	The name of the instance of Ektron eWebWP editor.
Width	The width of the editor in pixels or a percent. For example, 700 or "100%".
Height	The height of the editor in pixels or a percent. For example, 400 or "100%".
Value	<p>If you want some text to appear in the editor the first time a user views it, you can enter text or a variable that contains the text.</p> <ul style="list-style-type: none"> • To enter text, enclose it within quotes (" "). • To enter a variable, define it elsewhere in the file.

Here is an example of a line that calls the custom tag.

```
<CFMODULE template="../../../ewebwp.cfm" EditorName="myContent1" Width="95%" Height="400"
Value="#variables.editor1#">
```

In this example, the initial content is defined in the variable `variables.editor1`, which is defined elsewhere in the file.

Integrating eWebWP with ASP.NET

This chapter explains

- using the sample files
- how to create an ASP page that hosts **eWebWP**

Using the Sample Pages

When you download **eWebWP**, Ektron provides sample pages that include the editor. The pages are located below the folder to which you installed **eWebWP**. The default location is

`C:\Inetpub\wwwroot\ewebwp\samples\aspnet.`

You should copy these samples to another directory or rename them, and then modify them as needed for your users. If you do not copy them, any changes you make could be overwritten when you reinstall or upgrade **eWebWP**.

Installing Sample Files

If you installed **eWebWP** using

- the .exe file, these files are installed automatically
- the .zip file, these files are installed when you extract the zip file

Most ASP.NET sample files are installed by default to the `ewebwp\samples\aspnet` directory. That directory has one subdirectory for each sample. The only exception is the `ewebwpaccess2000.mdb` file, which is installed to

`...\ewebwp\samples\common\database.` (See “Database Setup” on page 51 for more information about the database.).

Creating Your Own Page

If you want to create a new ASP.NET page and place **eWebWP** on that page, follow these steps.

1. Register the control file, ewebwp.ascx.
2. Set up a form.
3. Place the editor on the form.
4. Gain access to the posted content.

The rest of this section explains how to complete these tasks.

Register the Control File ewebwp.ascx

Your ASP.NET (aspx) page must register the ewebwp.asx user control file. To accomplish this, insert the `<%@ Register` tag at the top of your aspx page.

```
<%@ Register TagPrefix="ewep" TagName="ewebwpEditor" src="/ewebwp/ewebwp.ascx" %>
```

- TagPrefix determines a unique namespace for the user control
- TagName is the unique name for the user control
- The src attribute is the virtual path to the user control, for example `"../..../ewebwp.ascx"` or `"/ewebwp/ewebwp.ascx"`

Setting up a Form

Here is a sample form declaration. Be sure to enter `post` as the method.

```
<form id="Form1" method="post" runat="server">
```

Place the Editor on the Form

Place the user control tag in the Web form page just as you would an ordinary server control (including the `runat="server"` attribute). To place the editor on a Web Form, enter a line with the following elements within the form tags.

```
<ewe:eWebWPEditor id="TextHTML1" runat="server" height="250" width="100%" Text="initialcontent"></ewe:eWebWPEditor>
```

Attribute	Description
id	Enter a unique name for the editor, for example MyEditor1.
width, height	Enter the width and height of the editor in percent or pixels. Enclose the value in quotes (" "). If a percent, follow it with a percent sign (%), for example "50%". If pixels, just enclose the value in quotes, for example, "500".
text	<p>If you want text to appear in the editor the first time a user views it, enclose the text within quotes (" ").</p> <p>To dynamically pass content, set the property using a server-side script. For example, <code>TextHTML1.Text = "initial content"</code>, where <code>TextHTML1</code> is the id of the user control.</p> <p>Here is an example.</p> <pre><script language="VB" runat="server"> Sub Page_Load(Sender As Object, E As EventArgs) If (Page.IsPostBack) TextHTML1.Text = Request.Form("TextHTML1") Else TextHTML1.Text = "<p>Initial content 1</p>" End If End Sub </script></pre>

Here is an example.

```
<ewep:ewebwpEditor id="TextHTML1" runat="server" height="250" width="100%" Text="Editor 1"></ewep:ewebwpEditor>
```

You can also set the content using `TextHTML1.Text = "Some content"` in a `Page_load` subroutine or some other server-side event.

Gaining Access to the Posted Content

When posting to an action page, you have access to the posted content via `Request.Form("TextHTML1")`, where `TextHTML1` is the id of the user control.

```
<script language="VB" runat="server">  
    Sub Page_Load(Sender As Object, E As EventArgs)  
        If (Page.IsPostBack)  
            TextHTML1.Text = Request.Form("TextHTML1")  
        End If  
    End Sub  
</script>
```

Integrating eWebWP with ASP

This chapter explains

- using the sample files
- how to create an ASP page that hosts eWebWP

Using the Sample Files

When you download eWebWP, Ektron provides sample pages that include the editor. The files illustrate how to use eWebWP with Microsoft's Active Server Pages (ASP). You can use the sample pages to familiarize yourself and your users with eWebWP.

You should copy these files to another directory or rename them, and then modify them as needed for your users. If you do not copy them, any changes you make could be overwritten when you reinstall or upgrade eWebWP.

Installing Sample Files

If you installed eWebWP using

- the .exe file, these files are installed automatically
- the .zip file, these files are installed when you extract the zip file

Most ASP sample files are installed by default to the `ewebwp\samples\asp` directory. That directory has one subdirectory for each sample. The only exception is the `ewebwpaccess2000.mdb` file, which is installed to `...\ewebwp\samples\common\database`. (See "Database Setup" on page 51 for more information about the database.)

The sample files are explained in more detail below.

Database Sample

In the database sample (whose first page, index.asp, is illustrated below), you can edit content, save it to a database, and view the result as HTML output. You can also create new documents and delete existing ones. The content is stored in the wysiwyg table of the ewebwpassess2000.mdb database.

Ektron's eWebWP ASP Database Sample

[Ektron, Inc.](#)
 5 Northern Blvd
 Amherst, NH 03031, USA
 Phone: +1 603-594-0249
 Fax: +1 603-594-0258

[[Update Content](#)]

ID	Title	Available Actions [Add]
8	What is the eWebWP?	Edit View Delete
9	Features and Benefits	Edit View Delete
17	Image Support	Edit View Delete
18	Content management system - eMPower for ColdFusion	Edit View Delete
19	Content management system - Ektron CMS200	Edit View Delete

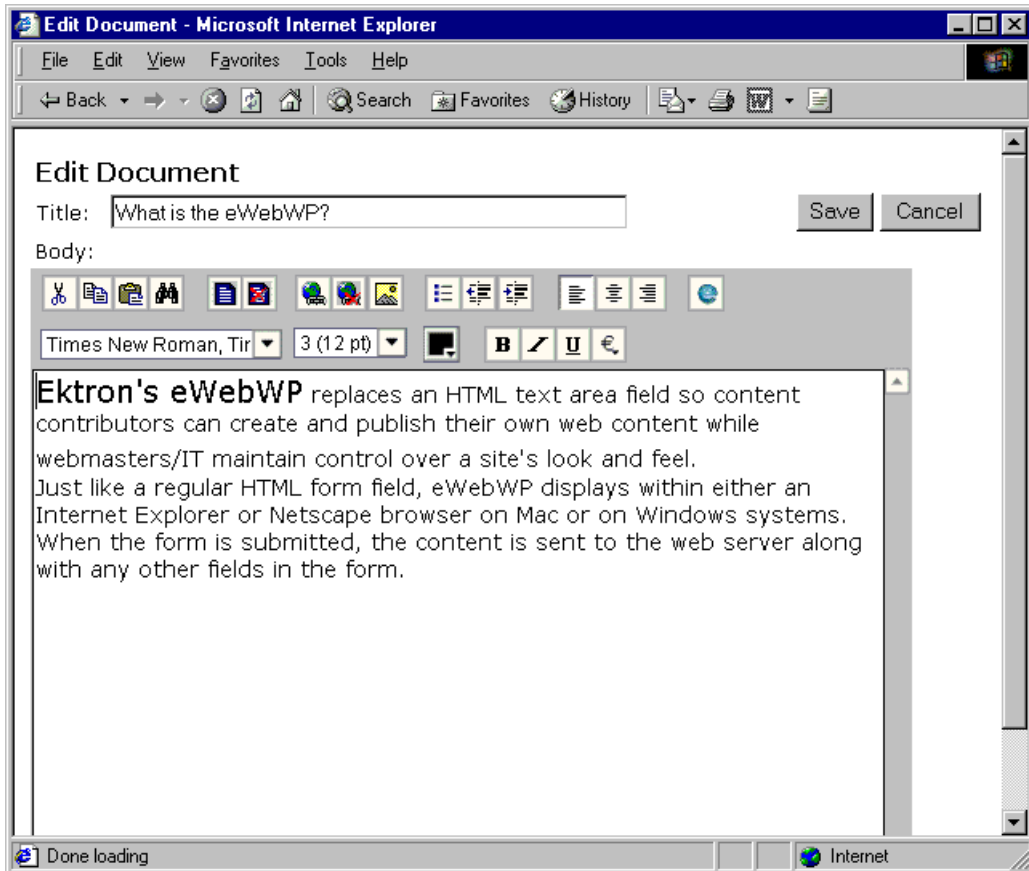
Note:
 Add - Insert a new document into the Database
 Edit - Modify a document and update the Database
 View - View the document in HTML
 Delete - Delete a document from the Database

Files in the Database Sample

File	Description
delete.asp	Displays the Delete Document screen, which prompts the user to confirm the decision to delete the document. If the user clicks Yes , the document is deleted from the sample database, and no longer appears on the index page.
edit.asp	The page that appears when the user clicks [Edit] from the index page. This page displays a title text box and an editor. The Title text box displays the document's title. The editor displays the document's content. Ektron provides a few sample documents. For them, a document id is provided as a URL parameter. If you are adding a document, a URL parameter is assigned when the document is saved.
error.asp	Displays "An Error Has Occurred" screen, which prompts user to return to previous screen and complete missing information. For example, this screen appears if the user clicks [Add] from the index page to create a new document, then tries to save the content without entering a title.
functions.asp	Provides basic support for database connectivity in ASP. An internal file that is invisible to users.
index.asp	The start page for the ASP integration example. From this page, you can edit, view, or delete sample content, and add new content.
new.asp	The page that appears when you click [Add] from the index page. This page displays a title text box and an editor. The Title text box collects the document's title. The editor collects the document's content. After the user enters content and presses Save , the document is assigned an id number and appears on the index page.
view.asp	The ASP page that appears when you click [View] from the index page. It displays a saved edit.asp page.

The Edit Sample

In the database sample (illustrated below), you can edit content and view the result as HTML output.



Files in the Edit Sample

File	Description
edit.asp	Lets you edit Web content, then save it and view the output on an HTML page.

Creating Your Own Page

If you want to create a new ASP page and place eWebWP on that page, the page needs to include these actions.

1. Include the ewebwp.asp file.
2. Set up a form.
3. Place the editor on the form.

The rest of this section explains how to complete these tasks.

Including a Reference to ewebwp.asp

Your ASP page must include a reference to the ewebwp.asp file. You can use a relative or an absolute path.

You must place the #Include line within the page's head tags.

NOTE For a relative path, follow the include command with **file**. For an absolute path, follow the include command with **virtual**.

Entering a Relative Path

Use this syntax to indicate a *relative* path to the domain name of this file.

```
<head>
<!-- #Include file="../../../ewebwp.asp" -->
</head>
```

Entering an Absolute Path

Use this syntax to indicate an *absolute* path to the domain name of this file.

```
<head>  
<!-- #Include virtual="/ewebwp/ewebwp.asp" -->  
</head>
```

Setting Up a Form

When setting up a form, follow these steps.

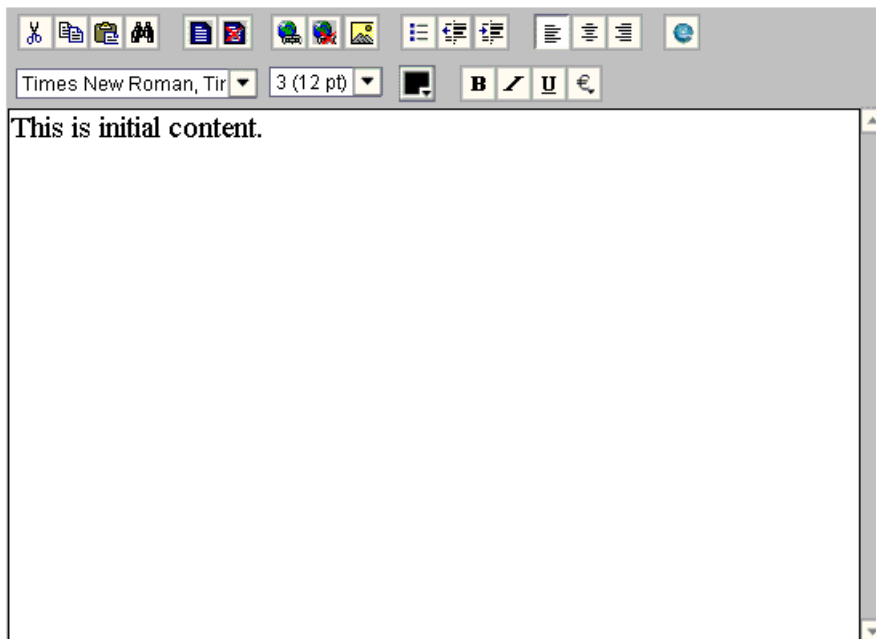
1. Enter a url as the action. This defines the page that manipulates the user's input when the user clicks the save button.
2. Enter **Post** as the method.

Here is a sample form declaration.

```
<form action="edit.asp?preview" method="POST">
```

Placing the Editor on the Form

Place the editor within the form tags. You can place the editor as a box whose width and height you specify. This illustration depicts the editor appearing as a box.



Inserting the Editor

To place the editor on an ASP page, enter a line with the following elements within the form.

```
<% =eWebWPEditor("field name", width, height, initial content) %>
```

Argument	Description
field name	Enter the name of the field that stores content within quotes (" "). It does not matter what the name is, but the field name on the page that retrieves the content must match this name.
width, height	Enter the width and height of the editor in percent or pixels. <ul style="list-style-type: none"> • If a percent, enclose the value in quotes ("") and follow it with a percent sign (%), for example "50%". • If pixels, quotes are optional, for example, 500.
initial content	If you want some text to appear in the editor the first time a user views it, you can enter text or a variable that contains the text. <ul style="list-style-type: none"> • To enter text, enclose it within quotes (""). • To enter a variable, define it elsewhere in the file.

Here is an example of a line that calls the editor. In this example, the initial content is defined in the variable `strContent1`, which is defined elsewhere in the file.

```
<% =eWebWPEditor("TextHTML1", "100%", 250, strContent1) %>
```

Integrating eWebWP in an JSP Environment

Using the Sample Pages

When you download **eWebWP**, Ektron provides sample pages that include the editor. The default location is `www.mywebsite.com/ewebwp/samples/jsp`.

You should copy these samples to another directory or rename them, and then modify them as needed. If you do not copy them, any changes you make could be overwritten when you reinstall or upgrade **eWebWP**.

Creating Your Own Page

If you want to create a new JSP page and place **eWebWP** on that page, the page needs to include these actions.

1. Include the `ewebwp.jsp` file.
2. Set up a form.
3. Place the editor on the form.

The rest of this section explains how to complete these tasks.

Including a Reference to `ewebwp.jsp`

Your JSP page must contain an include command that specifies a relative path to the `ewebwp.jsp` file. Place the `include` line within the page's head tags.

Use this syntax to indicate a relative path to the domain name of this file.

```
<head>
<%@ include file="/ewebwp/ewebwp.jsp"%>
</head>
```

Setting Up a Form

When setting up a form, follow these steps.

1. Declare a form.
2. Give it a name.
3. Enter **Post** as the method.

Here is a sample form declaration.

```
<Form name="frmMain" method="POST">
```

Placing the Editor on the Form

To place the editor on a JSP page, enter a line with the following elements within the form.

```
<%= eWebWPEditor("field name", width, height, initial content)%>
```

Argument	Description
field name	Enter the name of the field that stores content within quotes (" "). It does not matter what the name is, but the field name on the page that retrieves the content must match this name.
width, height	<p>Enter the width and height of the editor in percent or pixels.</p> <ul style="list-style-type: none"> • If a percent, enclose the value in quotes (" ") and follow it with a percent sign (%), for example "50%". • If pixels, enclose the value in quotes (" "), for example, "500". <p>IMPORTANT! When integrating eWebWP in a Java Server Page (JSP) environment, you <i>must</i> surround width and height values in pixels with quotes. For example:</p> <pre><%= eWebWPEditor("TextHTML1", "100%", "250", strContent1) %></pre>

Argument	Description
initial content	<p>If you want some text to appear in the editor the first time a user views it, you can enter text or a variable that contains the text.</p> <ul style="list-style-type: none">• To enter text, enclose it within quotes (" ").• To enter a variable, define it elsewhere in the file.

Here is an example of a line that calls the editor. In this example, the initial content is defined in the variable `strContent1`, which is defined elsewhere in the file.

```
<%= eWebWPEditor("TextHTML1", "100%", "250", strContent1)%>
```

Integrating eWebWP in a PHP Environment

Using the Sample Pages

When you download **eWebWP**, Ektron provides sample pages that include the editor. The default location is `www.mywebsite.com/ewebwp/samples/php`.

You should copy these samples to another directory or rename them, and then modify them as needed for your users. If you do not copy them, any changes you make are overwritten when you reinstall or upgrade **eWebWP**.

Creating Your Own Page

If you want to create a new PHP page and place **eWebWP** on that page, the page needs to include these actions.

1. Include the `ewebwp.php` file.
2. Set up a form.
3. Place the editor on the form.

Finally, you would update your License Key information as needed.

The rest of this section explains how to complete these tasks.

Including a Reference to `ewebwp.php`

Your PHP page must contain an include command that specifies a relative path to the `ewebwp.php` file. Place the `include` line within the page's head tags.

Use this syntax to indicate a relative path to the domain name of this file.

```
<head>
<?php include("../.../ewebwp.php"); ?>
</head>
```

Setting Up a Form

When setting up a form, follow these steps.

1. Declare a form.
2. Enter a url as the action. This defines the page that manipulates the user's input when the user presses the save button.
3. Enter **Post** as the method.

Here is a sample form declaration.

```
<form name="frmMain" action="edit.php" method="POST">
```

Placing the Editor on the Form

Place the editor within the form tags as a box whose width and height you specify.

Inserting the Editor

To place the editor on a PHP page, enter a line with the following elements within the form.

```
<?php echo eWebWPEditor("field name", height, width, $initial_content); ?>
```

Argument	Description
field name	Enter the name of the field that stores content within quotes (" "). It does not matter what the name is, but the field name on the page that retrieves the content must match this name.

Argument	Description
height, width	Enter the height and width of the editor in percent or pixels. <ul style="list-style-type: none">• If a percent, enclose the value in quotes (" ") and follow it with a percent sign (%), for example "50%".• If pixels, quotes are optional, for example, 500.
initial content	If you want some text to appear in the editor the first time a user views it, you can enter text or a variable that contains the text. <ul style="list-style-type: none">• To enter text, enclose it within quotes (" ").• To enter a variable, define it elsewhere in the file.

Here is an example of a line that calls the editor. In this example, the initial content is defined in the variable `strContent1`, which is defined elsewhere in the file.

```
<?php echo eWebWPEditor("TextHTML1", "100%", 250, $strContent1); ?>
```

Integrating eWebWP in a Perl Environment

Creating Your Own Page

If you want to create a new Perl page and place **eWebWP** on that page, the page needs to include these actions.

1. Include the `ewebwp.pm` file.
2. Set up a form.
3. Insert the editor.

Finally, you would update your License Key information as needed. (See also: “License Keys” on page 20.) The rest of this section explains how to complete these tasks.

Include a Reference to `ewebwp.pm`

Your Perl page must contain a command to include the javascript files, as illustrated below.

```
use ewebwp;  
ewebwp::jsinclude("/ewebwp/");
```

Setting Up a Form

When setting up a form, follow these steps.

1. Declare a form.
2. Enter a url as the action. This defines the page that manipulates the user’s input when the user presses the save button.
3. Enter **Post** as the method.

Here is a sample form declaration.

```
print "<form name=\"frmMain\" action=\"edit.pl?preview\" method=\"POST\">\n\n";
```

Inserting the Editor

To place the editor on a Perl page, enter a line with the following elements within the form.

```
ewebwp::ewebwpEditor(fieldname, width, height, initial content);
```

Here is an example of a line that calls the editor. In this example, the initial content is defined in the variable `strContent1`, which is defined elsewhere in the file.

```
ewebwp::eWebWPEditor("TextHTML1", "100%", "250", $strContent1);
```

Integrating eWebWP Using JavaScript

Other sections of this manual describe how to integrate **eWebWP** in the following environments.

- ASP.NET
- ASP
- ColdFusion
- JSP
- Perl
- PHP

Regardless of your server environment, you can always integrate **eWebWP** using JavaScript. This section explains how to integrate **eWebWP** onto a web page. It consists of the following topics.

- ["Using the Sample Pages" on page 44](#)
- ["Creating Your Own Page" on page 45](#)
- ["Saving Content" on page 49](#)
- ["Testing the Page" on page 49](#)

Using the Sample Pages

When you download eWebWP, Ektron provides sample pages that include the editor. The pages are located in the samples folder below the folder to which you installed eWebWP. The default location in Windows is

```
C:\inetpub\wwwroot\ewebwp\samples\html
```

You should copy these samples to another directory or rename them, and then modify them as needed for your users. If you do

not copy them, any changes you make are overwritten when you reinstall or upgrade eWebWP.

Creating Your Own Page

If you want to place eWebWP on an HTML page, the page needs to include these actions.

1. Create an HTML page with header and body tags.
2. Include the eWebWP JavaScript file.
3. Set up a form.
4. Create an input area.
5. Invoke the editor.

The rest of this section explains how to complete these tasks.

Create an HTML Page

Set up a typical HTML page.

```
<HTML>
<head>
<title>eWebWP</title>
</head>
<body>
</body>
</HTML>
```

Include the eWebWP JavaScript File

Your page must include a reference to the ewebwp.js file. Place the src reference within the head tags.

```
<script language="JavaScript1.2" src="/ewebwp/ewebwp.js"></script>
```

Enter a Form Element

Within the body tags, enter a set of form tags. Assign the `method` attribute to the form tags, and `post` as the method's value. Also, assign the `name` attribute and assign a value to it. Finally, assign the `action` attribute and enter a URL as the attribute value. The value defines the page that manipulates the user's input when the user presses the save button.

Here is an example.

```
<form name="frmMaint" action="action.htm" method="post">
</form>
```

Inserting the Editor

Within the form tags, enter a content field, which can be a hidden field, text input type tag, or textarea tag. This example uses a hidden field.

```
<input type=hidden name="MyContent1" value="This is initial content.">
```

See Also: ["Encoding Characters in the Value Attribute" on page 47](#)

Declaring a Content Field after Creating the Editor

If the content field (typically a hidden field) appears *after* the ewebwp.create code, the following error message appears below the editor.

Content field must be declared prior to creating the editor.

If you must declare the content field after creating the editor, delete the error message before entering the create command.

```
eWebEditProMessages.elementNotFoundMessage=" ";
ewebwp.create(...);
```

The content will still be loaded, but it cannot check to see if the content field exists.

Creating the Editor

Below the input tags, place the editor using the following JavaScript.

```
<script language="JavaScript1.2">
<!--
    ewebwp.create("field name", width, height);
//-->
</script>
```

Argument	Description
field name	Enter the name of the field within quotes (" "). The field name must match the value of the <code>name</code> attribute in the input type tag.
width, height	Enter the width and height of the editor in percent or pixels. If a percent, enclose the value in quotes (" ") and follow it with a percent sign (%), for example "50%" . If pixels, quotes are optional, for example, 500 . Ektron highly recommends setting the width to 550 pixels and the height to 400 pixels.

For example

```
<script language="JavaScript1.2">
<!--
ewebwp.create("MyContent1", 700,150);
/-->
</script>
```

The content is loaded into the editor and saved when the save button is pressed.

Encoding Characters in the Value Attribute

Initial content for the editor is typically stored in the value attribute of a hidden field. For example,

```
<input type="hidden" name="MyContent1" value="This is the initial content.">
```

If the content includes a quote ("), greater or less than character (<>), or an ampersand (&), the browser prematurely terminates the display of the content. For example, the input declaration

```
<input type="hidden" name="MyContent1" value="Characters that need to be encoded: " & <tag>">
```

would display the following text in the editor

```
Characters that need to be encoded:
```

This problem occurs because the browser cannot distinguish between one of these characters and the delimiters of the value attribute.

Also, if you use single quotes to delimit the value attribute, which is not recommended, you need to encode all single-quote characters.

To solve this problem, you must encode these characters when storing them in a hidden field. You would insert the character's *entity* or *character reference* in place of the actual character in the value field.

The following table lists the characters and corresponding entity and character reference values.

Character	Entity	Character Reference	Comments
&	&	&	Must be encoded first.
>	<	<	
<	>	>	
"	"	"	Value attribute must be quoted with ", not '.

NOTE The order in which characters are encoded is important. The ampersand (&) must be encoded before you encode the other characters.

How the Server Converts Characters

Your Web application server must convert these characters. For example, ASP offers the Server.HTMLEncode function. If your environment does not provide such a function, you need to write it. It is straightforward and requires the use of a string substitution function. The pseudo code to encode these characters appears below.

```
String strContent
strContent = ReplaceString(strContent, "&", "&amp;")
strContent = ReplaceString(strContent, "<", "&lt;")
strContent = ReplaceString(strContent, ">", "&gt;")
strContent = ReplaceString(strContent, "\"", "&quot;")
```


Encoding the Single Quote

We recommend surrounding the value attribute with double quotes, but if you decide to use single quotes, you must encode the single quote character (also known as an apostrophe).

Character	Entity	Character Reference	Comments
'	' (but see comments)	'	&apos; is for XML parsers but may not be supported by an HTML browser. Therefore, the character reference (') is preferred, because HTML browsers <i>and</i> XML parsers support it.

Content Stored in a Textarea Field

When content is stored in a textarea field, the greater/less than characters (<>) do not need to be encoded, because textarea does not use a value attribute. The double-quote ("), single-quote (') and ampersand (&) characters should be encoded in a textarea field, although most browsers accept them without encoding.

Saving Content

Content is saved (that is, copied to the hidden field) when the user clicks the save button. This action results in the following sequence.

1. The eWebEditPro.save method saves the filtered content in the hidden field to a temporary cache in the browser.
2. **eWebWP** submits the form containing the editor if there is no other submit button or image in the form.
3. The content is saved permanently when the form is submitted and its fields are posted to the server.

Testing the Page

After you create your Web page, test it to verify that it works as planned. When testing the page, you cannot simply double click

the .html file. Instead, you must type the following url into the Web browser's address field:

```
http://localhost/ewebwp folder/filename.htm
```

For example, if the file is named mytest.htm and it is located in the ewebwp folder, enter this url into your browser:

```
http://localhost/ewebwp/mytest.htm
```

Database Setup

Windows-Based Systems

How eWebWP Interacts with a Database

eWebWP works with any database and any dynamic Web server.

NOTE Because it does not directly connect to a database, **eWebWP** can be used with any database or even without a database.

The sample database stores the Web content for the sample Web pages.

Ektron provides a sample Microsoft Access database, `ewebwpaccess2000.mdb`. The database sample can familiarize you with a possible way to store content created or modified by the editor.

You can use the sample database that Ektron provides or choose a different database. “Configuring the Database for ASP, ASP.NET, JSP and PHP” on page 52 explains how to set up the sample database or change the database that stores content.

How eWebWP Saves to the Database

When a user saves Web content from the editor, **eWebWP** does not write directly to the database. Instead, an OnClick event to the Save button executes JavaScript to read the contents from **eWebWP** into a hidden field. Then, the Web server’s action page writes the contents of the hidden field to the database.

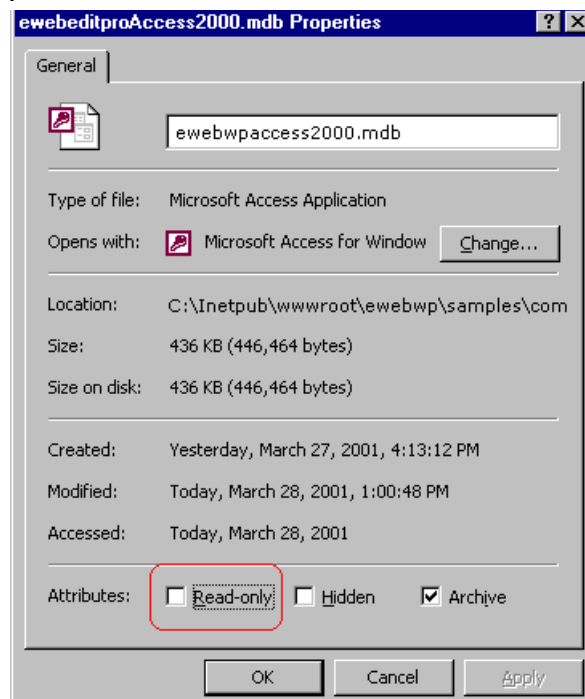
Configuring the Database for ASP, ASP.NET, JSP and PHP

eWebWP's installation file configures a sample Microsoft Access database, `ewebwpassess2000.mdb`, in `www.mycompany.com\ewebwp\samples\common\database`.

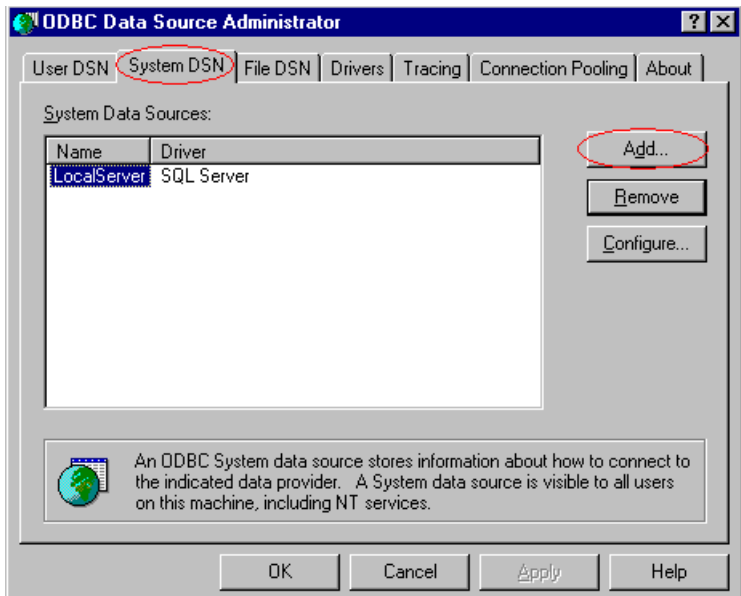
However, if you install **eWebWP** from the .zip file, you must manually configure the DSN. You would also follow this procedure to change the database to which Web content is saved.

To configure the database, follow these steps.

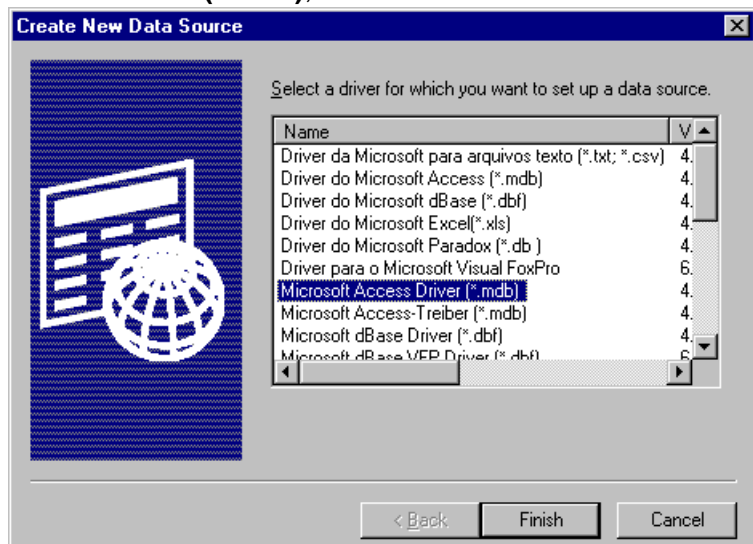
1. Make sure that the database file (`ewebwpassess2000.mdb`) is not read-only. To see if the file is read-only
 - Open Windows Explorer, then go to `... \ewebwp\samples\common\database` and select `ewebwpassess2000.mdb`.
 - Right click the mouse and select **Properties**.
 - Make sure that the **Read-only** box on the Properties windows is not checked. If the box is checked, click it to uncheck it.



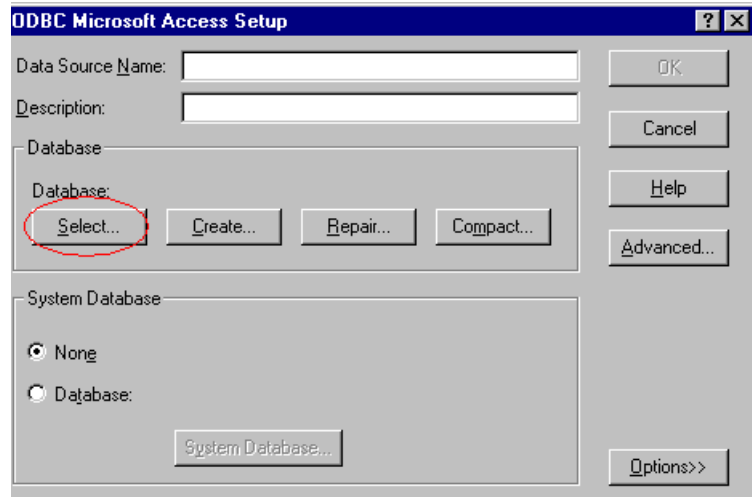
2. Open ODBC Data Sources. To do this
 - in Windows 95 or 98, click **Start > Settings > Control Panel > Data Sources (ODBC)**.
 - in Windows NT 4.0 or 2000, click **Start > Settings > Control Panel > Administrative Tools > Data Sources (ODBC)**.
3. Click the **System DSN** tab and then the **Add** button.



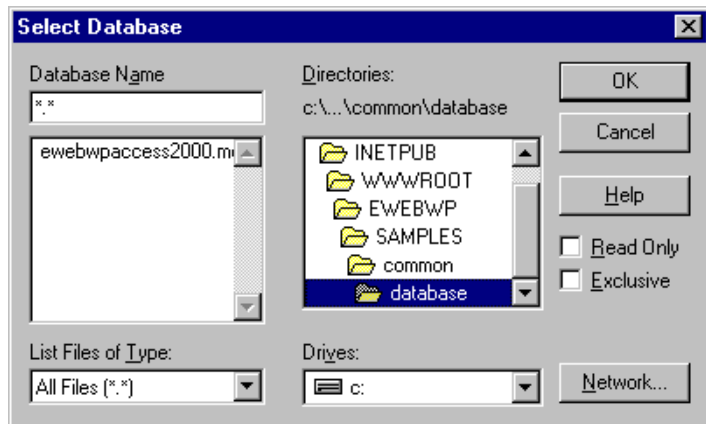
4. On the Create New Data Source screen, select **Microsoft Access Driver (*.mdb)**, then click **Finish**.



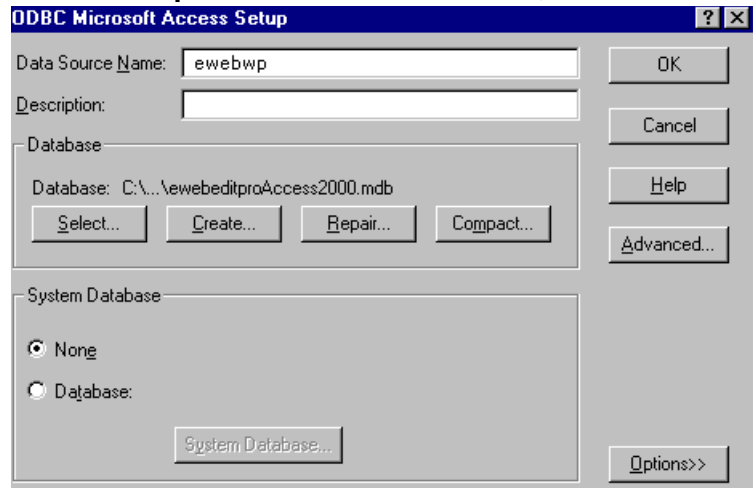
5. On the ODBC Microsoft Access Setup dialog box, click **Select**.



6. Navigate to the
 C:\Inetpub\wwwroot\ewebwp\samples\common\database folder
 and select the ewebwaccess2000.mdb database.



7. Enter **ewebwp** as the Data Source Name, then click **OK**.

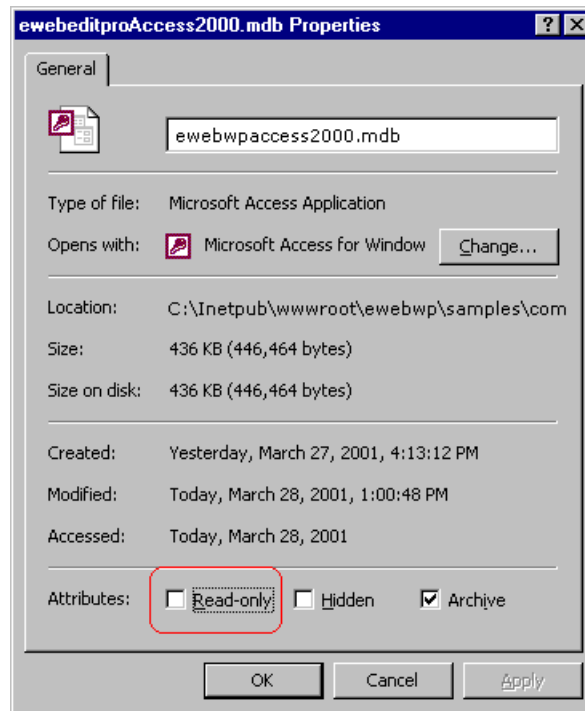


Configuring the Database for ColdFusion

To configure the database for ColdFusion, follow these steps.

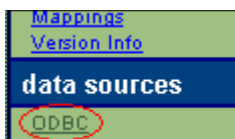
1. Make sure that the database file (ewebwpaccess2000.mdb) is not read-only. To see if the file is read-only
 - Open Windows Explorer, then go to
`\inetpub\wwwroot\ewebwp\samples\common\database`
and select ewebwpaccess2000.mdb.
 - Right click the mouse and select **Properties**.

- If the **Read-only** box on the Properties window is checked, click it to uncheck it.



2. In your browser address field, type `http://localhost/cfide/administrator/index.cfm`.
3. Log into the ColdFusion Web server.
4. Under **data sources**, click **ODBC**.
5. In the **ODBC driver** field, select **Microsoft Access Driver (*.mdb)**.
6. Enter **ewebwp** in the **Data Source Name** field, then click **Add**.

NOTE If you change the **Data Source Name** to something other than **ewebwp**, you must update this reference in the template file, `ewebwpdefinedsn.cfm`. You would edit this line inside the custom tag `<cfset dsn = "ewebwp">`. Substitute your data source name for the default **Data Source Name**, **ewebwp**.



Data Source Name

ODBC Driver

7. A new screen appears. At the **Database File** field, enter
C:\inetpub\wwwroot\ewebwp\samples\common\database\ewebwaccess2000.mdb.
8. Click **Create**.

Create ODBC Data Source [Microsoft Access Driver (*.mdb)]

Data Source Name ewebwp

Description

Database File C:\inetpub\wwwroot\ewebwp\samples

System Database

Driver Settings

Page Timeout 600

Buffer Size 0

Default Login Username admin Password

Create Cancel

9. Click the **Verify All** button on the top right corner of the screen.



Verify All

Verify Status

Non-Windows Based Systems

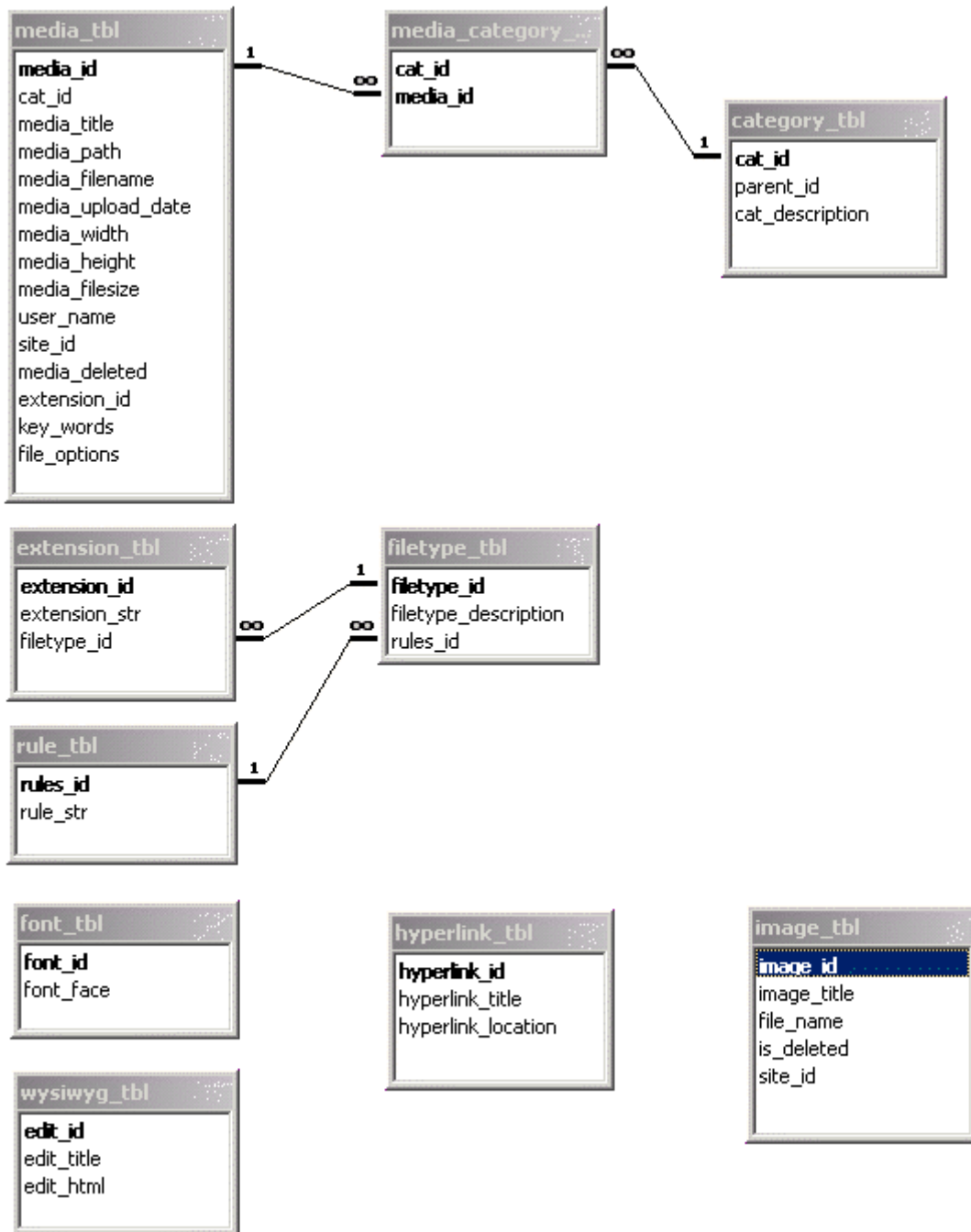
Ektron provides a sample Microsoft Access database. However, it does not work on a non-Windows platform. So, you must set up an ODBC compliant database that operates on a non-Windows platform, such as MySQL, Oracle, Sybase, etc.

If you are using ColdFusion, make sure the host server system administrator registers the data system name via the ColdFusion Administrator. (Read the Cold Fusion Manual for assistance.)

You can use the sample Access database as a model when creating your database. The sample database has the following tables.

- Font
- Hyperlink
- Image
- WYSIWIG
- Media
- Media Category
- Category
- Extension
- Rule
- Filetype

Each table's fields and field values are listed below.



Installing the Macromedia Flash Player on Clients

After you install **eWebWP** on a server and integrate it onto a Web page, clients can use that page to access the editor. The first time a client accesses the page, **eWebWP** checks to see if an appropriate version of the Macromedia Flash player is installed. (The minimum version is 6,0,47,0.) If the correct Flash player is installed, **eWebWP** launches and the user can begin editing.

If the appropriate Flash player is not installed, the user needs to install it. The installation procedure depends on whether the user uses Internet Explorer (IE) or another browser to open the Web page.

Checking the Flash Player Version

Users operating a client, internet-enabled PC can determine which version of the Macromedia Flash Player is installed by following these steps.

1. Move the cursor to the toolbar.
2. Right click the mouse. (If you are using a Macintosh computer, hold down <Ctrl> while clicking the mouse.)
3. Click **About Macromedia Flash Player**.
4. If the PC has internet access, it launches the following page.



5. Click **About** (circled above) to see the installed version of the Flash player. The minimum version is 6,0,47,0.

Installing the Flash Player with Internet Explorer

If the right Flash player is not installed and the client PC uses IE, **eWebWP** accesses Macromedia's Web site and initiates the download of the Flash player. When the installation is complete, the user can use **eWebWP**.

Installing the Flash Player with Other Browsers

If the right Flash player is not installed and the client PC uses a browser other than IE, the user must access the Flash player download page (<http://www.macromedia.com/shockwave/download/alternates/>) and install the player before using **eWebWP**.

Uninstalling eWebWP

You can install **eWebWP** on a server using either an .exe file (Windows) or a .zip file (Non-Windows). Similarly, there are two server uninstall procedures.

Uninstalling the .exe File

To remove **eWebWP** from a server that was installed using the .exe file, follow these steps.

1. Close any open sessions of **eWebWP**.
2. Click on Windows **Start** button > **Settings** > **Control Panel** > **Add/Remove Programs**.
3. Click on **eWebWP** and then **Change/Remove**.
4. Follow the screen instructions to complete the removal.

Uninstalling the .zip File

To remove **eWebWP** from a server that was installed using the .zip file, follow these steps.

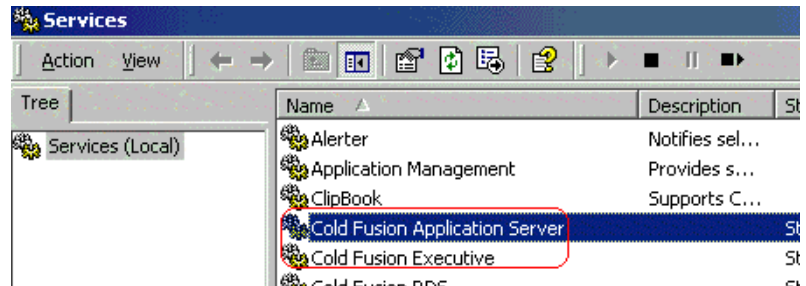
1. Close any open sessions of **eWebWP**.
2. Unregister the database. To do this, undo the steps explained in “Database Setup” on page [51](#).
3. Delete the `/ewebwp` directory.

Problems Deleting the eWebWP Folder with ColdFusion

If you try to delete the ewebwp folder in ColdFusion, you may receive a warning message that the database is locked. To unlock the database, you have two options.

First Option for Unlocking the Database

1. From the Windows **Start** button, click **Settings > Control Panel > Administrative Tools > Services**.
2. Stop and restart ColdFusion Application Server and ColdFusion Executive.



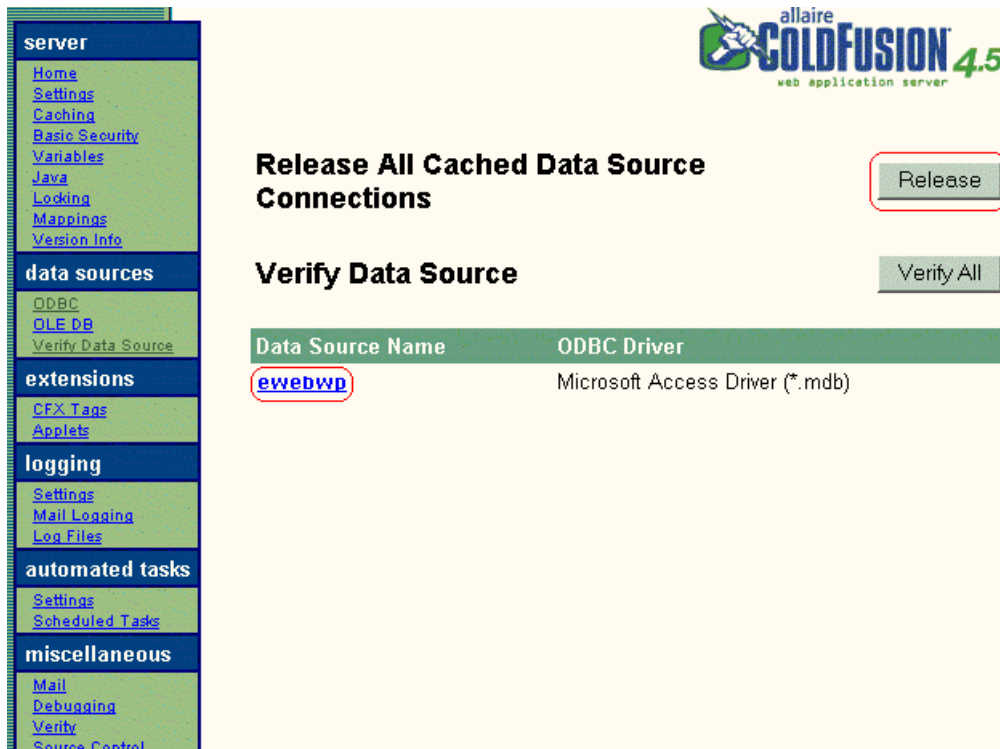
Second Option for Unlocking the Database

1. Log in as a ColdFusion administrator.
2. Click **Verify Datasource** from left side of the screen.

The screenshot shows the ColdFusion Administrator interface. On the left sidebar, the 'Verify Data Source' option under 'data sources' is highlighted with a red circle. The main content area displays the 'Release All Cached Data Source Connections' and 'Verify Data Source' buttons. Below these buttons is a table showing the data source configuration.

Data Source Name	ODBC Driver
ewebwp	Microsoft Access Driver (*.mdb)

3. Verify your datasource name (**ewebwp**) and click the **Release** button on the upper right corner of the window.



The screenshot shows the ColdFusion 4.5 administration console. On the left is a navigation tree with categories: server, data sources, extensions, logging, automated tasks, and miscellaneous. The main content area displays the 'Release All Cached Data Source Connections' dialog. At the top right of the dialog is the 'Release' button. Below it is the 'Verify Data Source' section with a 'Verify All' button. A table lists the data sources, with 'ewebwp' highlighted in the 'Data Source Name' column.

Data Source Name	ODBC Driver
ewebwp	Microsoft Access Driver (*.mdb)

Index

B

- browser
 - requirements
 - viewing, 3
 - web server, 3

C

- characters
 - encoding in the Value attribute, 47
- content
 - saving in editor
 - JavaScript integration, 49
- creating Web page
 - invoking ColdFusion custom tag, 23
 - setting up form, 23
- custom tags
 - ColdFusion
 - eWebWP, invoking, 23

D

- database
 - configuring, 51
 - ColdFusion system s, 55
 - non-Windows based systems, 57
 - Windows-based systems, 52
 - how eWebWP files to, 51
 - how eWebWP interacts with, 51
 - non-Windows, 57

E

- editor
 - inserting
 - JavaScript integration, 46
 - inserting as a box
 - ASP integration, 35
 - placing on form
 - ASP integration, 34
 - saving content
 - JavaScript integration, 49
- encoding

- characters in the Value attribute, 47
- eWebWP.ascx, registering, 26
- eWebWP.js file
 - including, 45

F

- Flash Player, see Macromedia form
- ColdFusion
 - setting up, 23
 - placing editor on
 - ASP integration, 34
 - placing editor on using
 - ASP.NET, 26
 - setting up for ASP integration, 34
 - setting up to include eWebWP in ASP.NET, 26
- form elements
 - entering on a web page
 - JavaScript integration, 45

H

- host name, updating relative path, 8

I

- including the eWebWP JavaScript file, 45
- installation
 - non-windows server, 15
 - testing
 - installation, 16
 - windows server, 4
 - testing, 11
- integrating eWebEditPro using JavaScript, 44
- integrating eWebWP
 - with ASP, 29
 - with ASP.NET, 25
 - with ColdFusion, 23
 - with JSP, 36
 - with Perl, 42
 - with PHP, 39

J

- JavaScript integration, 44

K

- keys, license see license keys

L

- license keys, 20
 - domains supported, 22
 - domains where used, 22
 - format, 20
 - how eWebWP checks, 21
 - inserting, 20
 - inserting during non-Windows installation, 15
 - inserting during Windows installation, 4
 - invalid key message, 21
 - registering domains, 22

M

- Macromedia Flash Player
 - installing on client, 60
 - installing on server, 11
 - requirement, 3

O

- operating system requirements, server, 3

P

- page
 - Web
 - ASP, adding eWebWP to, 33
 - ASP.NET
 - adding eWebWP to, 26
- path, relative to host name, updating, 8

R

- relative path to host name, updating, 8
- requirements, 1

S

- sample code
 - ASP, 29
- sample files
 - ASP
 - database sample, 30
 - installing, 29

- installing
 - ASP.NET, 25
- sample pages
 - JSP
 - using, 36
 - PHP
 - using, 39
- saving content
 - JavaScript integration, 49
- server, operating system requirements, 3
- system requirements, 3

U

- uninstalling eWebWP, 62

W

- Web page
 - ASP
 - adding eWebWP to, 33
 - ASP.NET
 - adding eWebWP to, 26
 - creating
 - JavaScript integration, 45
 - referring to ewebwp.jsp, 36
 - referring to ewebwp.php, 39
 - JSP
 - creating
 - place editor on form, 37
 - set up form, 37
 - PHP
 - creating, 39
 - placing editor on form, 40
 - setting up form, 40
- web page
 - procedure for creating, 23
- Web server requirements, 3